



Director: James Pacala, MD, Medical School

Co-Director: Kristine Talley, PhD, CNP, RN, School of Nursing

Co-Director: Joseph Gaugler, PhD, School of Public Health

Program Manager: Teresa Schicker, MPA

<https://mngwep.umn.edu/>



UNIVERSITY OF MINNESOTA

Driven to Discover®



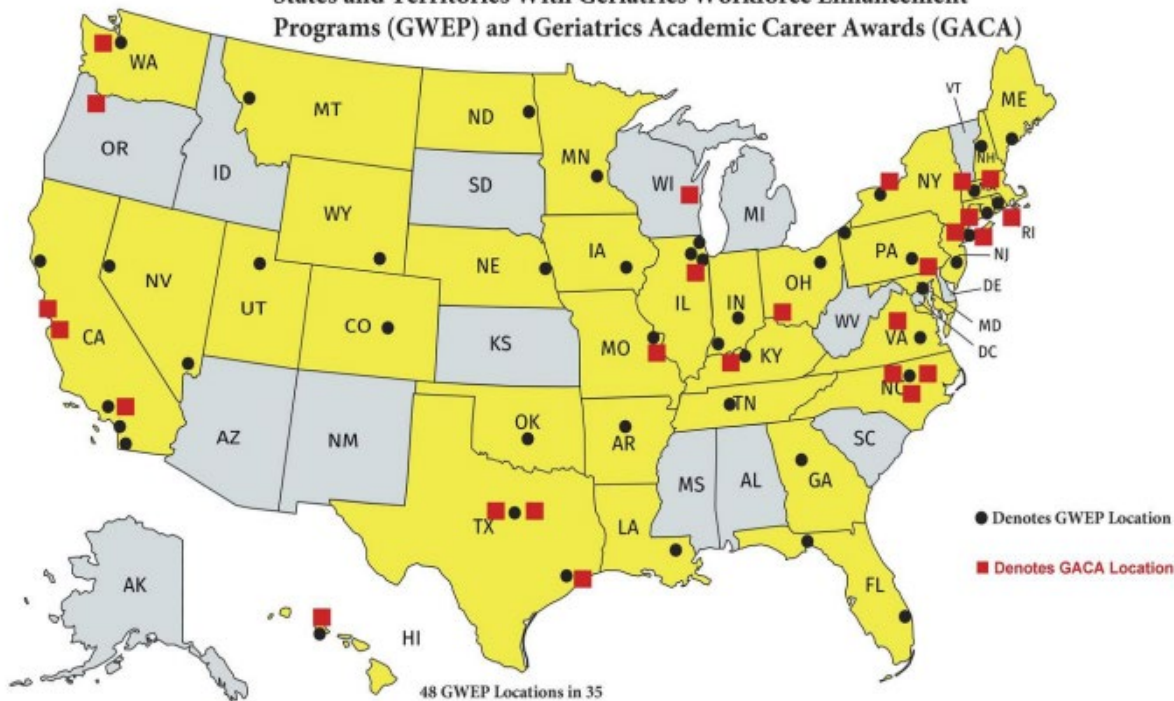
Bringing Together Minnesota's Best Minds in Geriatrics Care and Education

- Transform primary care clinics for Age-Friendly care & learning
- Educate current & future health professionals in Age-Friendly care
- Dementia care, support, & safety for families & direct care workers





48 Geriatric Workforce Enhancement Programs (GWEP) funded by Health Resources & Services Administration (HRSA)



48 GWEP Locations in 35 States and 2 Territories

26 GACA Awardees in 16 States



eldercareworkforce.org

2019





Challenges for the Geriatric Workforce

Increase Faculty & Professionals Specialized in Geriatrics

- Physicians
- Nurse Practitioners
- Registered Nurses
- Long Term Care Specialists
- Allied health professionals
- Dental professionals

Train the Healthcare Workforce to Improve Care

- Train direct care workers and health professionals about aging
- Implement Age-Friendly care across the spectrum of acute, primary, dental, and long term care



UNIVERSITY OF MINNESOTA

Driven to Discover®



Primary Care Needs to be Age-Friendly

People age 65+ use all Health Systems

- **25% of office visits**
- 35% of hospital stays
- 2.5% live in nursing homes

Few Health Professionals Specialize in Geriatrics

- <1% physicians
- <1% physician assistants
- 8% nurse practitioners
- 1% registered nurses
- <1% pharmacists
- 4% social workers
- <1% dentists





What Needs to Be Done?

- We need to incentivize and train faculty, students and health professionals to provide Age-Friendly care.
- We need to implement and incentivize Age-Friendly & Dementia-Friendly practices into primary & dental care





At the University of Minnesota, we know how to train & prepare the workforce to provide Age-Friendly care

Complex Conditions

- Multi-morbidity
- Multiple medications
- Frailty
- Advanced directives

Geriatric Syndromes

- Dementia
- Delirium
- Falls
- Urinary Incontinence

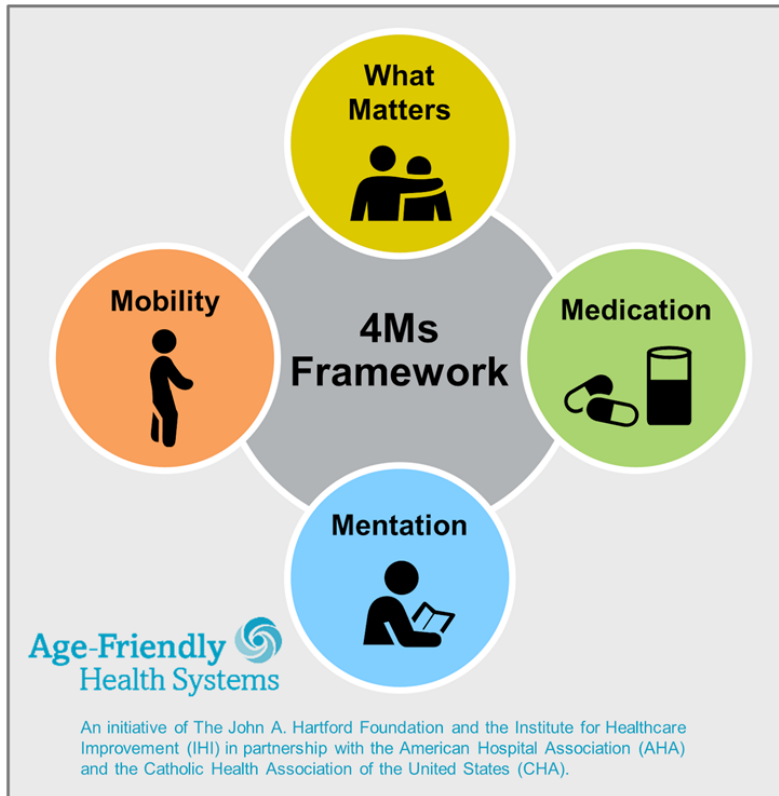


UNIVERSITY OF MINNESOTA

Driven to Discover®



GWEP: Transforming Primary Care Clinics for Age-Friendly Care & Learning



What Matters

Know and align care with each older adult's specific health outcome goals and care preferences including, but not limited to, end-of-life care, and across settings of care.

Medication

If medication is necessary, use Age-Friendly medication that does not interfere with What Matters to the older adult, Mobility, or Mentation across settings of care.

Mentation

Prevent, identify, treat, and manage dementia, depression, and delirium across settings of care.

Mobility

Ensure that older adults move safely every day in order to maintain function and do What Matters.





How is Primary Care not Age- Friendly?



UNIVERSITY OF MINNESOTA

Driven to Discover®



GWEP: Educating Current & Future Health Professionals in Age-Friendly Care

Educational Resources on Age-Friendly Care

- [Age-Friendly Care & Education Collection](#)
- [Geriatric Education Toolkits](#)
- [Disrupt Aging](#)
- [Age Friendly Universities](#)

Inspire & Support Future & Current Workforce to Choose Geriatrics

- [Interprofessional Geriatrics Case Competition](#)
- [Dementia Friends](#)
- [Minnesota Geriatrics ECHO with Hennepin Health](#)
- Nursing and CNA training on LGBTQ+ Age-Friendly Care
- Expert speakers for webinars



UNIVERSITY OF MINNESOTA

Driven to Discover®



GWEP: Offering Dementia Care, Support, & Safety for Families & Direct Care Workers

Programs for Health Professionals

- [Dementia Friendly Dental Practices](#)
- [Dementia Friendly Dental Practice Advanced Training](#)
- [Dementia Friendly @ Work for Healthcare](#)

Programs for Families & Caregivers

- [Caring For People With Memory Loss](#)
- African Immigrant Memory Loss Project
- [Dementia Educational Experience Roadshow](#)
- Film: [Art + Medicine: Healthy Aging](#)
- [Alter™](#) for Dementia Friendly Congregations



Reach of MN GWEP

38,624 Attendees of MN-Northstar GWEP Events,
Conferences & Trainings



14,059 Patients, Families, Caregivers, & Community



23,173 Health Professionals & Staff



1,392 Students, Residents & Fellows

Partners to Advance Age-Friendly Care & Education



Health Resources & Services Administration



MN Leadership Council on Aging



INTERNATIONAL INSTITUTE of Minnesota



BOLD
PUBLIC HEALTH
CENTER OF EXCELLENCE
ON DEMENTIA
CAREGIVING



MINNESOTA
DENTAL
ASSOCIATION



Institute for
Healthcare
Improvement



MINNESOTA ASSOCIATION OF
AREA AGENCIES ON AGING



TRELIS



The Immigrant
Memory Collaborative



ALTER
INSPIRING AND EQUIPPING FAITH COMMUNITIES



MAGIC
Minnesota Association of
Geriatrics Inspired Citi



**Dementia
Friends
Minnesota**
A Program of TRELIS

PRACTICE



IMPROVED HEALTH and
LEARNING OUTCOMES

EDUCATION



NATIONAL CENTER for
INTERPROFESSIONAL
PRACTICE and EDUCATION



FAMILIES &
LONG TERM CARE



Center for
Healthy Aging
and Innovation



Minnesota
Department of Veterans Affairs

mi DEPARTMENT
OF HEALTH



A Program of TRELIS



UNIVERSITY OF MINNESOTA
Driven to Discover



Incentives for Students, Health Professionals & Faculty

- Scholarships
- Stipends
- Loan forgiveness



UNIVERSITY OF MINNESOTA

Driven to Discover®



We are here to partner with Minnesotans to create Age-Friendly Health Systems, Health Professionals, and Dementia Support

